

Dial Callipers

Rugged construction – High accuracy – Patented shockproof design – Ideal for use in the workshop.

Models TESA® CCMA-M

Easy-to-read dial callipers – Slider with metal dial housing – Models with a 200 or 300 measuring span fitted with a wheel drive.



DIN 862
(Style 1AR)



≤100 mm: 20 µm
>100 mm: 30 µm



Hardened
stainless steel



32 mm
diameter rotating dial
with lock



Slider
with
locking screw



Steel gear
mechanism,
hardened and ground.



Patented
shockproof design



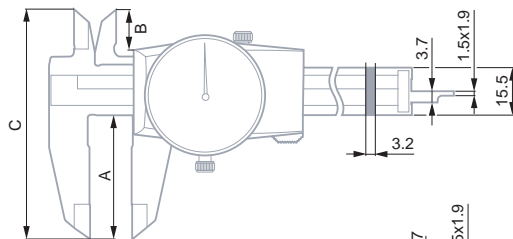
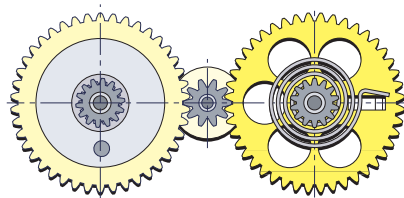
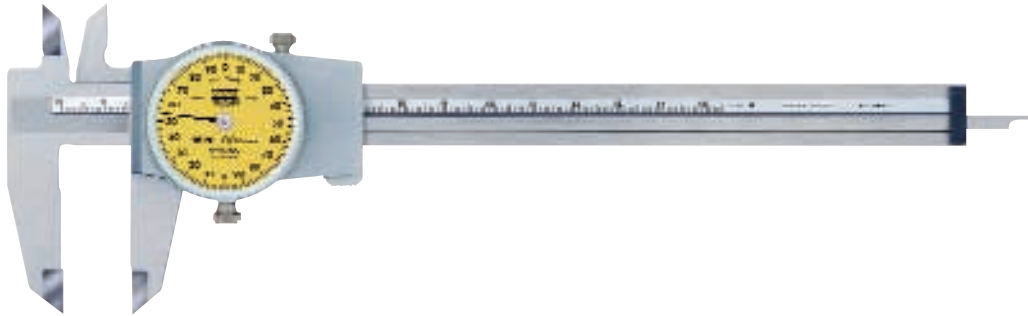
Suited
plastic case



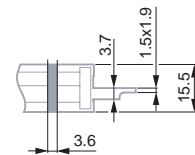
Identification
number



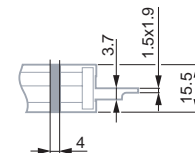
Inspection
report with a
declaration of conformity



05.10008
05.20002



05.10045



05.10046



Wheel drive



Amm

Bmm

Cmm

05.10008	0 ÷ 150 mm	0,02 mm	2 mm	without	40	13	74
05.20002	0 ÷ 6 in	0,001 in	0.1 in	without	40	13	74
05.10045	0 ÷ 200 mm	0,02 mm	2 mm	with	50	18,6	89,5
05.10046	0 ÷ 300 mm	0,02 mm	2 mm	with	64	20,6	105,5

Optional Accessories

05.60013 Depth measuring foot for models with a 150 mm / 6 in measuring span. Also see page A-25.