

## ● ETALON® Basic with 7 Pairs of Interchangeable Measuring Inserts



0,01 mm



0,5 mm



Micrometer element with a max. perm. error of 3 µm



8,0 mm dia., non-rotating spindle with fixing bore for a measuring insert

Adjustable attachment on anvil for a measuring insert with lock



Without spindle lock



Max. 10 N



Plastic case



Identification number



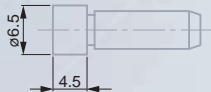
Inspection report with a declaration of conformity



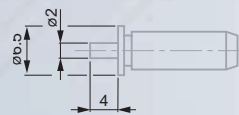
mm

02.19056	0 ÷ 25
02.19058	25 ÷ 50
02.19060	50 ÷ 75
02.19062	75 ÷ 100

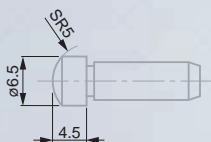
## Components of Full Micrometers



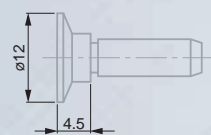
02.69020



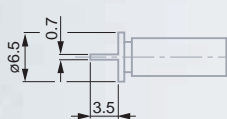
02.69021



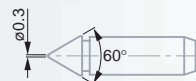
02.69022



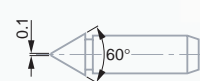
02.69023



02.69024



02.69025



02.69026



mm

### Single micrometers

02.19057	0 ÷ 25
02.19059	25 ÷ 50
02.19061	50 ÷ 75
02.19063	75 ÷ 100

### Full set of measuring inserts

02.69027

Includes a pair of the following inserts:



mm



mm



µm

02.69020	flat	∅ 6,5	0,6
02.69021	small, flat	∅ 2	0,6
02.69022	spherical	R = 5	
02.69023	large, flat	∅ 12	1,2
02.69024	narrow, flat	0,7	
02.69025	cone-shaped	∅ 0,3 / 60°	
02.69026	knife-edged	0,1 / 60°	