



0,001 mm
0,00005 in



mm / in
Conversion



Micrometer
element

with a max. perm. error
of 3 μ m



7,5 mm dia.,
non-rotating
spindle with fixing bore
for a measuring insert

Adjustable
attachment on anvil
for a measuring insert
with lock



Hardened steel
measuring faces



Max. 10 N



RS 232



Other
technical data
on page B-3



Plastic case



Identification
number



Inspection
report with a
declaration of conformity

MICROMASTER[®] with 7 Pairs of Interchangeable Measuring Inserts

Non-rotating spindle - Without spindle lock



No	mm	in
60.30045	0 ÷ 30	0 ÷ 1.2
60.30046	25 ÷ 55	1.0 ÷ 2.1

Components of Full Micrometers



Single micrometers

60.30099	0 ÷ 30	0 ÷ 1.2
60.30100	25 ÷ 55	1.0 ÷ 2.1

Full set of measuring inserts

02.69027

Includes one pair of the following inserts:

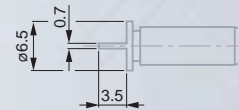


02.69020	flat	\varnothing 6,5
02.69021	small, flat	\varnothing 2
02.69023	large, flat	\varnothing 12
02.69024	narrow, flat	0,7
02.69026	knife-edged	0,1/60°
02.69022	spherical	R = 5
02.69025	cone-shaped	\varnothing 0,3/60°

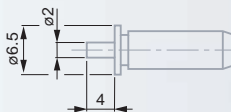
Specially designed measuring faces also available upon request.



02.69020



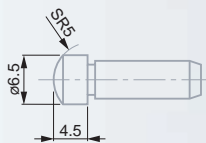
02.69024



02.69021



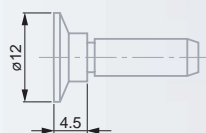
02.69025



02.69022



02.69026



02.69023