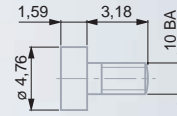
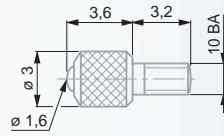


## Accessories for MERCER Series 70 Dial Gauges

10BA coupling threads.



Standard spherical measuring inserts.

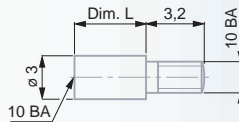
No	Material	mm
35.60072	Steel	1,6
35.60073	Carbide	1,6

Insert with a flat measuring face.

No	Material	mm
35.60074	Steel	4,76

Extensions for the measuring inserts.

No	Lmm
35.60075	12,7
35.60076	19,05
35.60077	25,4



Factory standard



0,001 in and 0,01 mm



2,4 mm or 1,2 mm



Rotating dial



Full-metal case housing

Fixing shank and plunger in hardened stainless steel



Without shockproof system



M2,5 thread for the measuring insert  
6,35 mm dia. holding rod that can be unscrewed



See in the table opposite



Mounted insert with a 3 mm dia. steel ball tip



Cardboard box



Identification number



Declaration of conformity

## MERCER Precision Dial Gauges with Back Plunger $\varnothing 1\ 1/2$ in / 38 mm – Standard Series 90



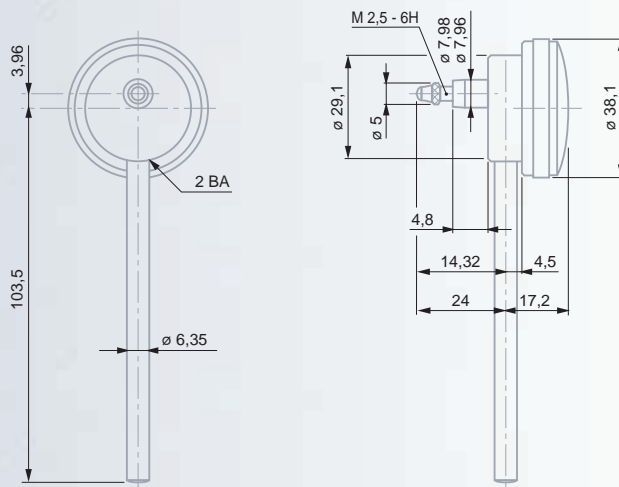
## Inch Versions - 0.001 in Reading

Regular models								
14.26060	91	0.001	0.05	0.14	without	0.05	0 ÷ 25 ÷ 0	≤ 1,5
14.26061	92	0.001	0.05	0.14	without	0.05	0 ÷ 25 ÷ 50	≤ 1,5



## Metric Versions - 0,01 mm Reading

Regular models								
14.16060	93	0,01	1	3,5	without	1	0 ÷ 50 ÷ 0	≤ 1,5
14.16061	94	0,01	1	3,5	without	1	0 ÷ 50 ÷ 100	≤ 1,5



## Accuracy

	0.001 in	0,01 mm
	Deviation span	0.0010 in 25 μm
	Total deviation span	0.0015 in 40 μm
	Repeatability limit	0.0005 in 12 μm
	Max. hysteresis	0.0005 in 12 μm

## Accessories for MERCER Series 90 Dial Gauges

Lever Probe	
35.60078	Amplification 1 : 1

