

## MERCER TOP Quality Dial Test Indicators (Lever-Type)

Models with extra long measuring span.

- Bidirectional measuring through automatic reversal inside the movement.
- Continuous clockwise pointer rotation providing clear unambiguous reading.
- Insensitive to magnetic fields.
- Jeweld movement with rubies.
- Bell-bearing lever system with measuring insert swivelling through 180°.
- Full-metal construction giving exceptional robustness.
- One-piece housing with 3 dovetail mounting attachments.



DIN 2270 and factory standard



See in the table opposite

Lever system with friction clutch acting as load inhibitor

Tungsten carbide ball tips

For sizes, see on the previous page E-59

Supplied in a suite plastic case including:  
1 2 mm dia. insert  
1 1/4 in dia. rigid fixing shank No. 18.50107

A 8 mm dia. fixing shank (part No. 18.40107 or a mounting lug (part No. 32.38013 can also be used instead of the 1/4 in dia. rigid shank. Both are provided at no extra cost if specified on order.

Identification number

Declaration of conformity

### Inch Models

No	in	in	in	Bezel dia. in		Measuring insert* L <sub>1</sub> in	L <sub>2</sub> in	N
18.26011	0.0005	0.06	0.02	1.063	0 ÷ 10 ÷ 20	0.72	0.5724	≤ 0,35
18.26012	0.0005	0.06	0.02	1.575	0 ÷ 10 ÷ 20	0.72	0.5724	≤ 0,35
18.26013	0.0005	0.12	0.04	1.063	0 ÷ 20 ÷ 40	1.44	1.2924	≤ 0,20
18.26014	0.0005	0.12	0.04	1.575	0 ÷ 20 ÷ 40	1.44	1.2924	≤ 0,20
18.26015	0.0001	0.024	0.004	1.063	0 ÷ 20 ÷ 40	0.72	0.5724	≤ 0,30
18.26016	0.0001	0.024	0.004	1.575	0 ÷ 20 ÷ 40	0.72	0.5724	≤ 0,30

### Metric Models

No	mm	mm	mm	Bezel dia. mm		Measuring insert* L <sub>1</sub> mm	L <sub>2</sub> mm	N
18.16011	0,01	1,5	0,5	27	0 ÷ 25 ÷ 50	18	14,26	≤ 0,35
18.16012	0,01	1,5	0,5	40	0 ÷ 25 ÷ 50	18	14,26	≤ 0,35
18.16013	0,01	3,0	1,0	27	0 ÷ 50 ÷ 100	36	32,26	≤ 0,20
18.16014	0,01	3,0	1,0	40	0 ÷ 50 ÷ 100	36	32,26	≤ 0,20
18.16015	0,002	0,6	0,1	27	0 ÷ 50 ÷ 100	18	14,26	≤ 0,30
18.16016	0,002	0,6	0,1	40	0 ÷ 50 ÷ 100	18	14,26	≤ 0,30

\* For both sizes L<sub>1</sub> and L<sub>2</sub>, see on page E-61.

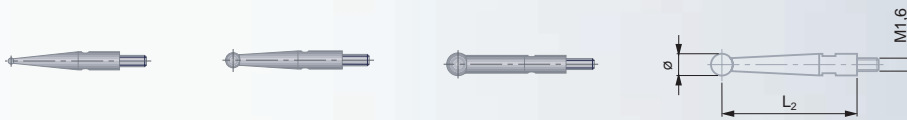
## Accuracy

		0.06 in	0.12 in	0.024 in	1,5 mm	3,0 mm	0,6 mm
		0.0005 in	0.0005 in	0.0001 in	0,025 mm 0,01 mm	0,01 mm	0,002 mm
	Deviation span	0.0007 in	0.0009 in	0.0005 in	17 µm	24 µm	13 µm
	Total deviation span	0.0008 in	0.0012 in	0.0006 in	20 µm	30 µm	15 µm
	Repeatability limit	0.00015 in	0.00025 in	0.0001 in	3 µm	6 µm	1,5 µm
	Max. hysteresis	0.00015 in	0.00025 in	0.0001 in	3 µm	6 µm	1,5 µm



## Accessories for MERCER Series 300 and TOP Quality Lever Dial Test Indicators

### Measuring Inserts



Tungsten carbide ball tips



M1,6 coupling thread



The original measuring insert mounted on every ROCTEST and other inserts with same nominal length but having different tip diameters are completely interchangeable.

0,8 mm	2 mm	3 mm	Insert length L <sub>2</sub>	Suitable for 300 series	TOP Quality
<b>Inch Models</b>					
<b>18.66010</b>	<b>18.66007</b>	<b>18.66017</b>	0.5278 in	18.26001 18.26003 18.26004	
<b>18.66011</b>	<b>18.66005</b>	<b>18.66018</b>	0.5724 in	18.26002	18.26011 18.26012 18.26015 18.26016
<b>18.66013</b>	<b>18.66001</b>	<b>18.66020</b>	1.2035 in	18.26006	
<b>18.66012</b>	<b>18.66008</b>	<b>18.66019</b>	1.6527 in	18.26005	
<b>18.66024</b>	<b>18.66009</b>	<b>18.66025</b>	1.2924 in		18.26013 18.26014
<b>Metric Models</b>					
<b>18.66014</b>	<b>18.66003</b>	<b>18.66021</b>	14,26 mm	18.16001 18.16002 18.16003	18.16011 18.16012 18.16016
<b>18.66016</b>	<b>18.66004</b>	<b>18.66023</b>	32,26 mm	18.16005	18.16013 18.16014
<b>18.66015</b>	<b>18.66006</b>	<b>18.66022</b>	41,26 mm	18.16004	

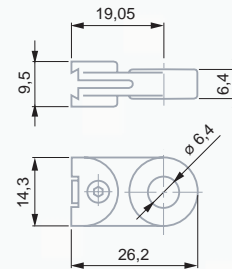
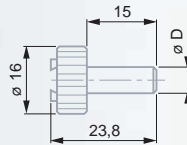
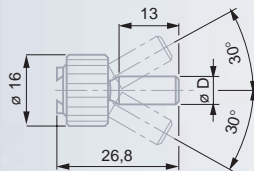
## Attachments for MERCER Series 300 and TOP Quality Lever-Type Dial Test Indicators

For a detailed description of the components shown in this catalogue as well as the complete accessory sets and order numbers, see on page E-50.



### Dovetail fixing shanks and mounting lug

18.50106	Fixing shank swivelling through $\pm 30^\circ$	$\varnothing 1/4$ in
18.50107	Rigid fixing shank	$\varnothing 1/4$ in
18.40106	Fixing shank swivelling through $\pm 30^\circ$	$\varnothing 8$ mm
18.40107	Rigid fixing shank	$\varnothing 8$ mm
18.40108	Fixing shank swivelling through $\pm 30^\circ$	$\varnothing 4$ mm
18.40109	Rigid fixing shank	$\varnothing 4$ mm
32.38013	Mounting lug	



## Additional Clamping Accessories

For a detailed description of the components shown in this catalogue as well as the complete accessory sets and order numbers, see on page E-50.

